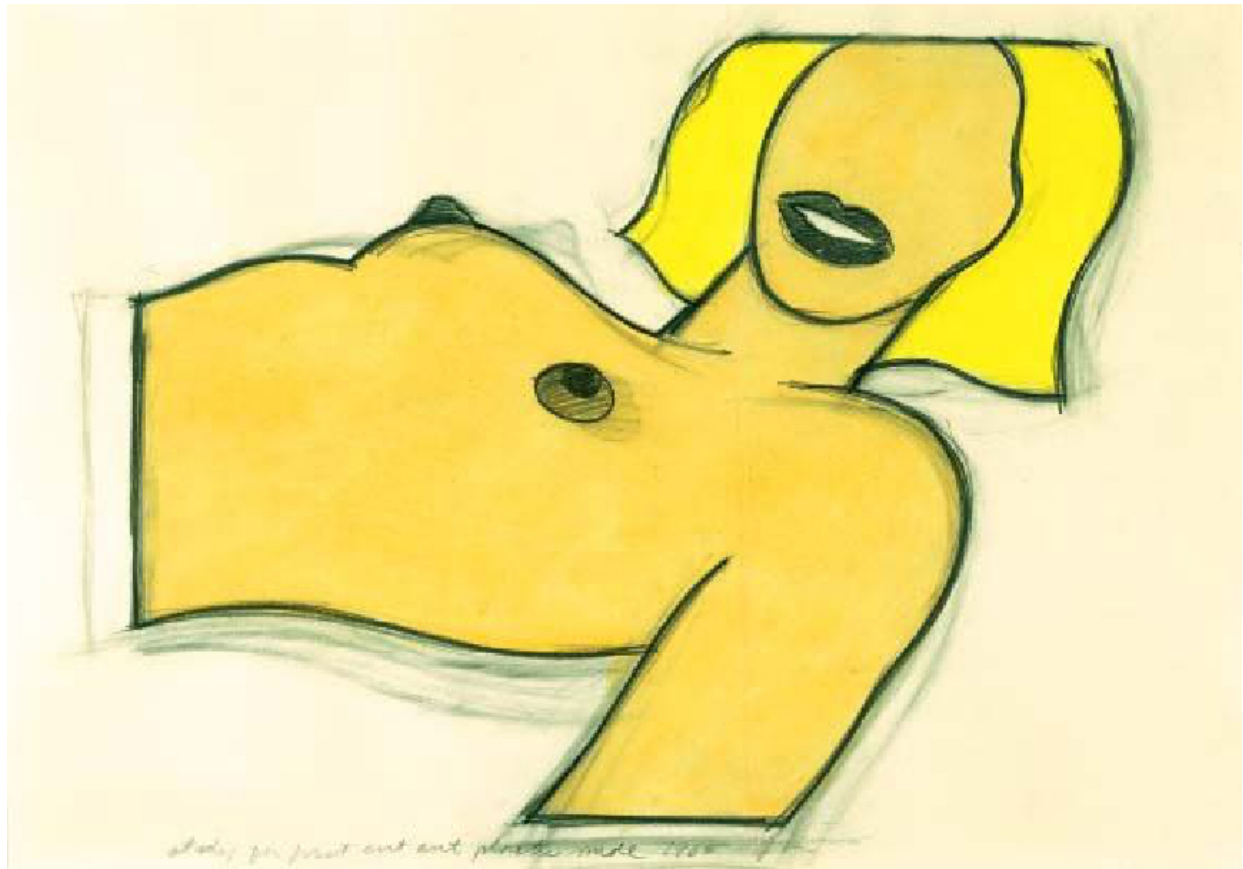




TOM WESSELMANN

PERFECTING THE PROCESS

SEPTEMBER 12 – OCTOBER 26, 2019



Tom WESSELMANN

STUDY FOR FIRST CUT-OUT PLASTIC NUDE, 1965

Pencil and liquitex on Bristol Board

13 3/4 x 19 1/2 in.



Tom WESSELMANN
STUDY FOR BEDROOM PAINTING #10, 1968
Pencil and liquitex on Bristol Board
8 5/8 x 11 in.



Tom WESSELMANN

MAQUETTE FOR STILL LIFE WITH BELT AND SNEAKER, 1979

Oil on canvas

10 3/4 x 24 x 6 3/8 in.



Tom WESSELMANN

STUDY FOR KATE NUDE, 1976

Pencil and colored pencil on tracing paper

5 x 6 1/16 in.

D7693

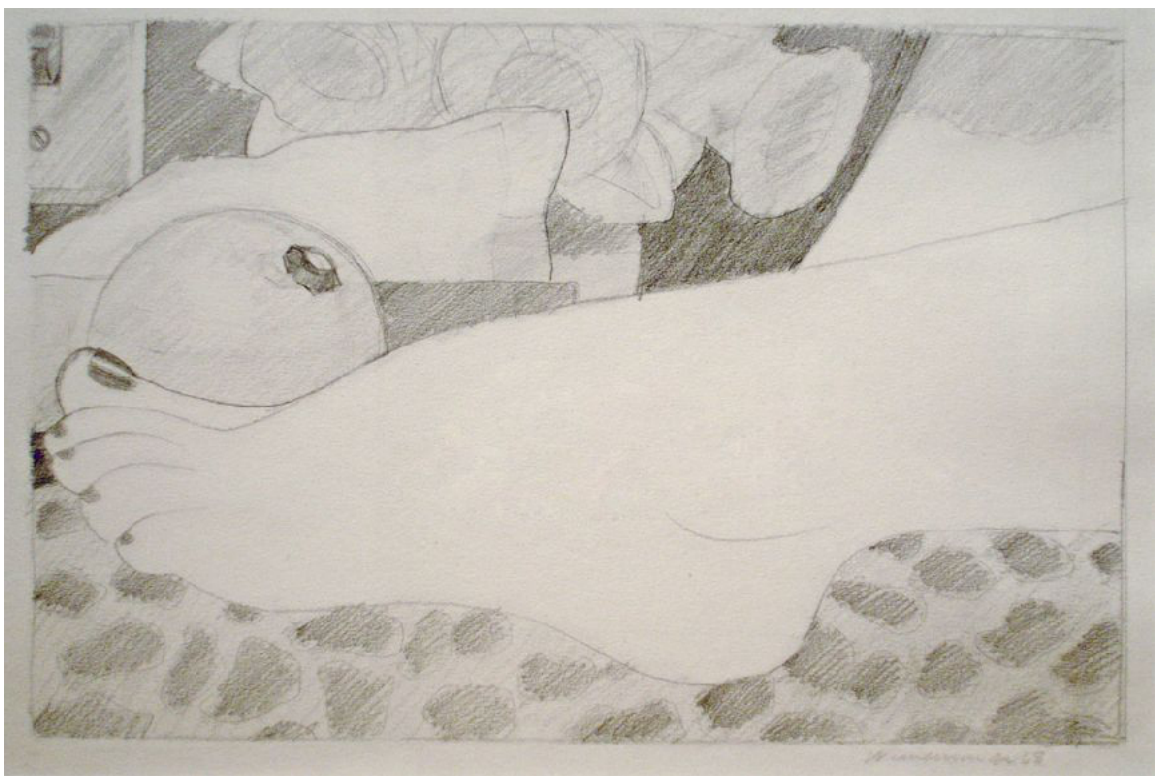


Tom WESSELMANN

JUDY, 1960

Pencil on paper

8 1/2 x 11 in.



Tom WESSELMANN

STUDY FOR A BEDROOM FOOT, 1968

Pencil on paper

7 1/8 x 10 7/8 in.



Tom WESSELMANN

JUDY 1959, 1959

Collage and acrylic on canvas

7 3/4 x 6 1/4 in.



Tom WESSELMANN

DRAWING FOR GREAT AMERICAN NUDE # 93, 1967-75

Pencil and thinned liquitex on paper

6 x 5 3/4 in.



Tom WESSELMANN

GREAT AMERICAN NUDE #82, 1966

Spray-painted formed Plexiglass

54 x 79 x 3 in.

unique variation of 5



Tom WESSELMANN

STUDY FOR NUDE WITH FLOWERS, 1976

ballpoint pen and thinned liquitex on paper

2 3/4 x 4 1/4 in.

'Wesselmann 76' upper right



Tom WESSELMANN

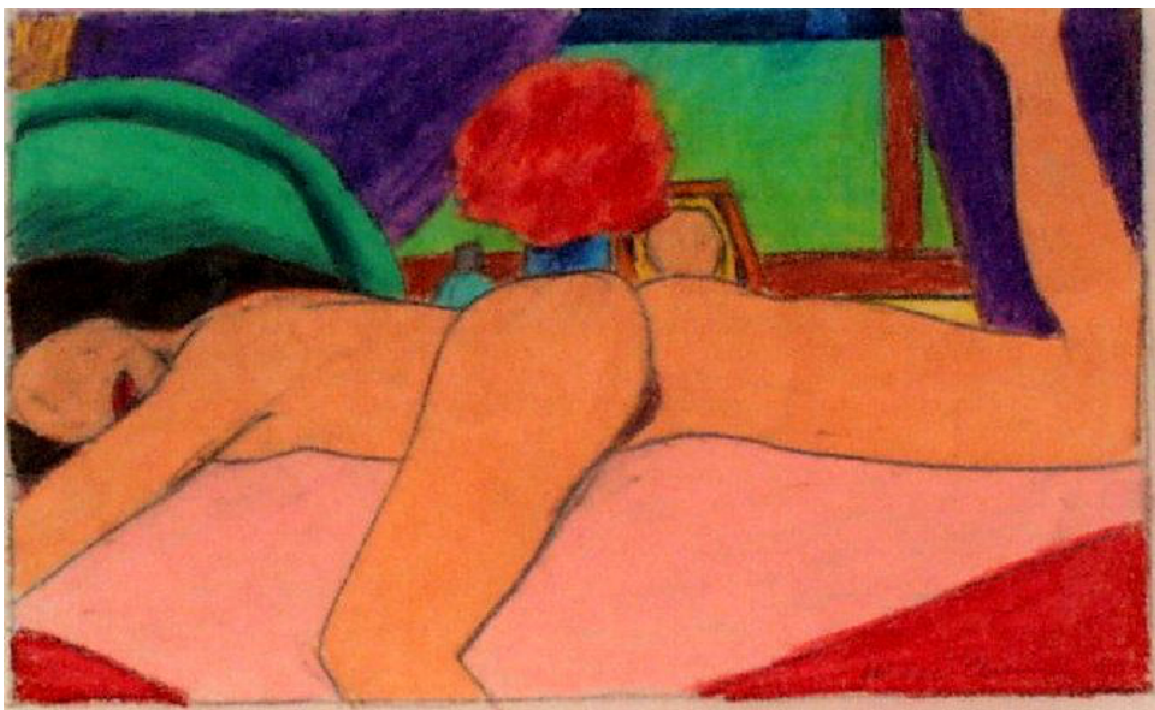
BEDROOM FACE DRAWING, 1977-79

Pencil on tracing paper

19.4 x 25.1 cm



Tom WESSELMANN
JUDY TRYING ON CLOTHES, 1996
Liquitex on rag board
40 1/4 x 60 in.
D9617



Tom WESSELMANN

STUDY FOR 1969 NUDE, 1969

Ballpoint pen and colored pencil on tracing paper

3 13/16 x 6 1/4 in.

D696



Tom WESSELMANN

STUDY FOR BEDROOM BLOND DOODLE (HEAVY LINE), 1984

Liquitex on Bristol Board

10 x 11 5/8 in.



Tom WESSELMANN
STUDY FOR BEDROOM PAINTING #14, 1968
Oil on canvas
12 x 14 in.

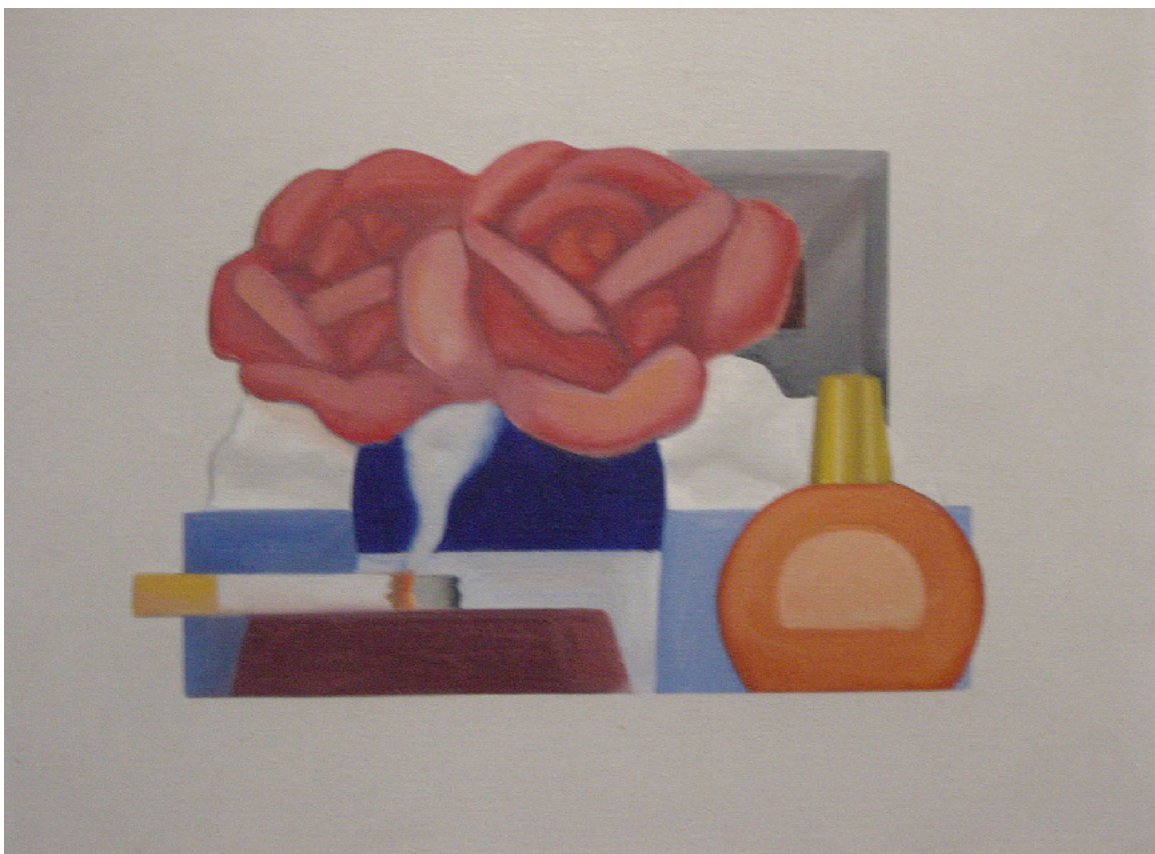


Tom WESSELMANN

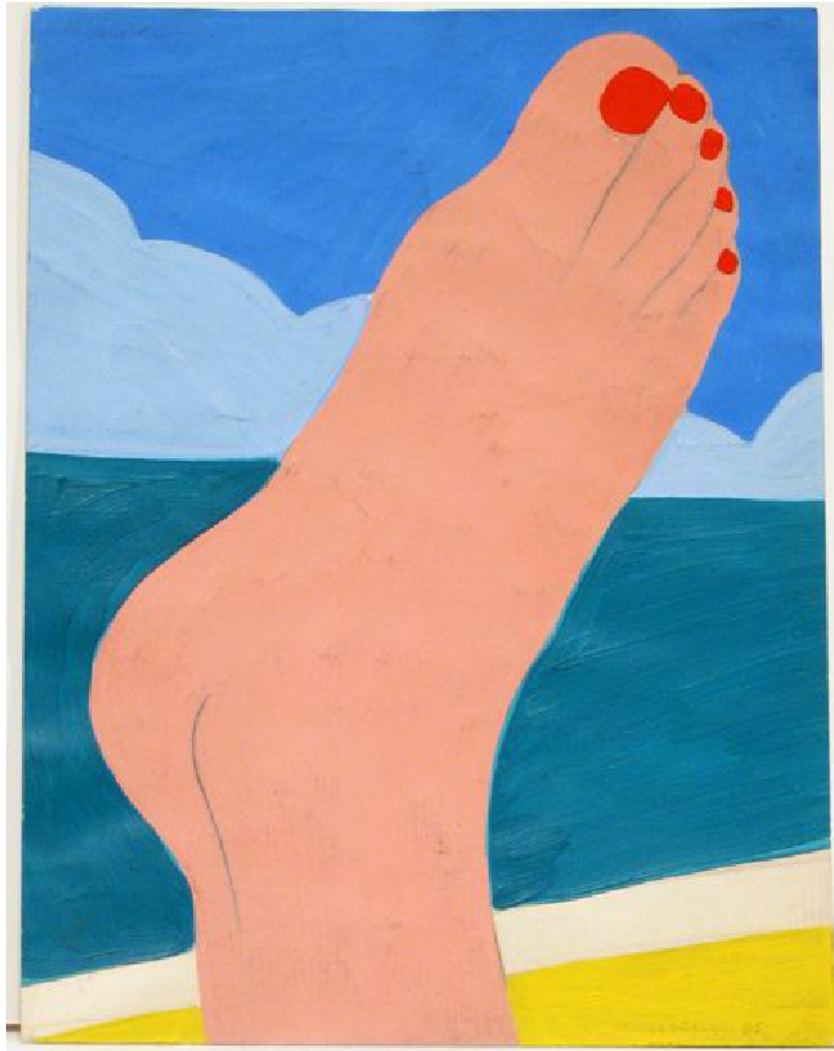
STUDY FOR NUDE WITH LAMP, 1977

Oil on canvas

12 1/2 x 15 in.

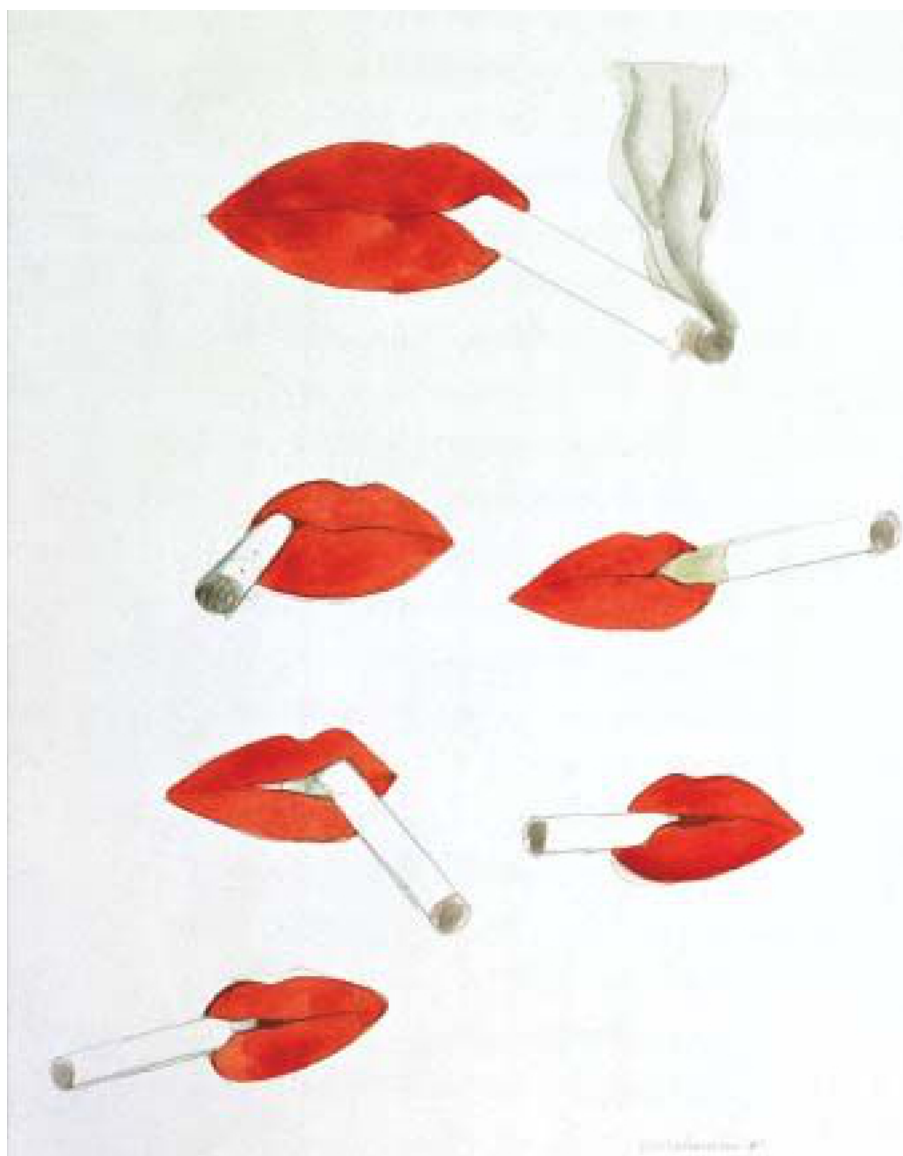


Tom WESSELMANN
STUDY FOR STILL LIFE PRINT, 1972
Oil on canvas
11 x 14 in.



TOM WESSELMANN D6598 STUDY FOR SEASCAPE #14 1965 pencil and
liquitex on paper 7.5 x 5.75"

Tom WESSELMANN
STUDY FOR SEASCAPE 14, 1965
Pencil and liquitex on paper
7 1/2 x 5 3/4 in.

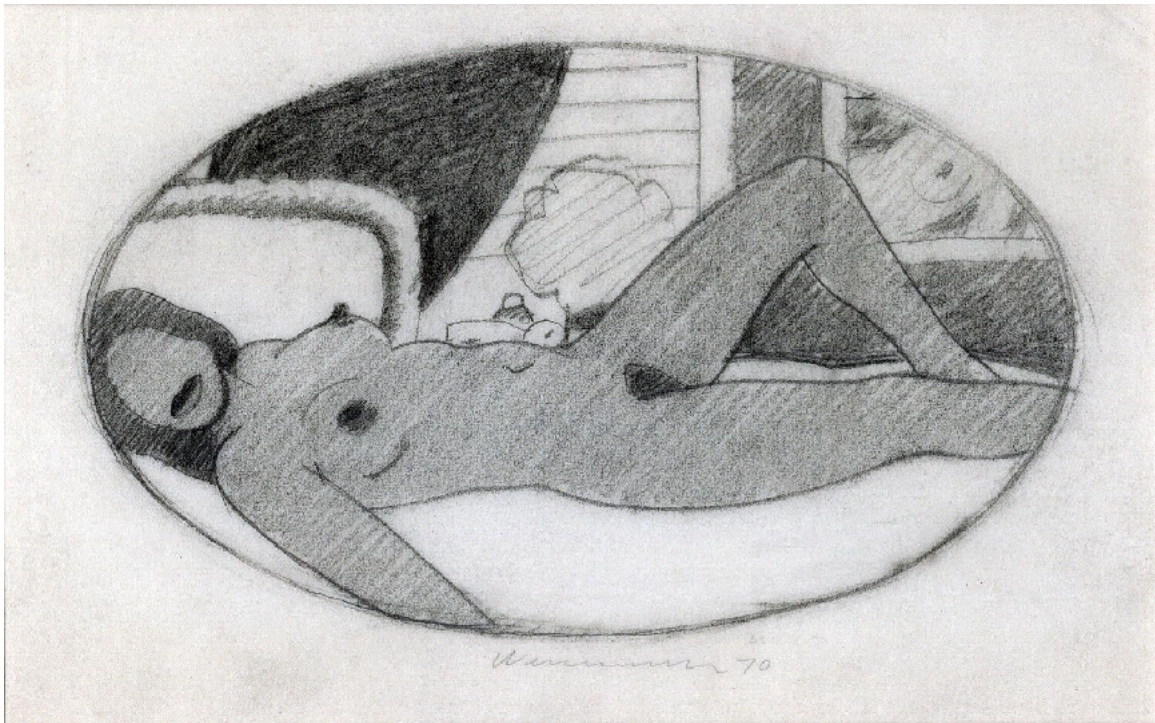


Tom WESSELMANN

PAGE OF SMOKERS, 1967

Ballpoint pen and colored pencil on paper

11 x 8 in.



Tom WESSELMANN
STUDY FOR OVAL NUDE, 1970
Pencil on tracing paper
6 1/8 x 7 7/8 in.



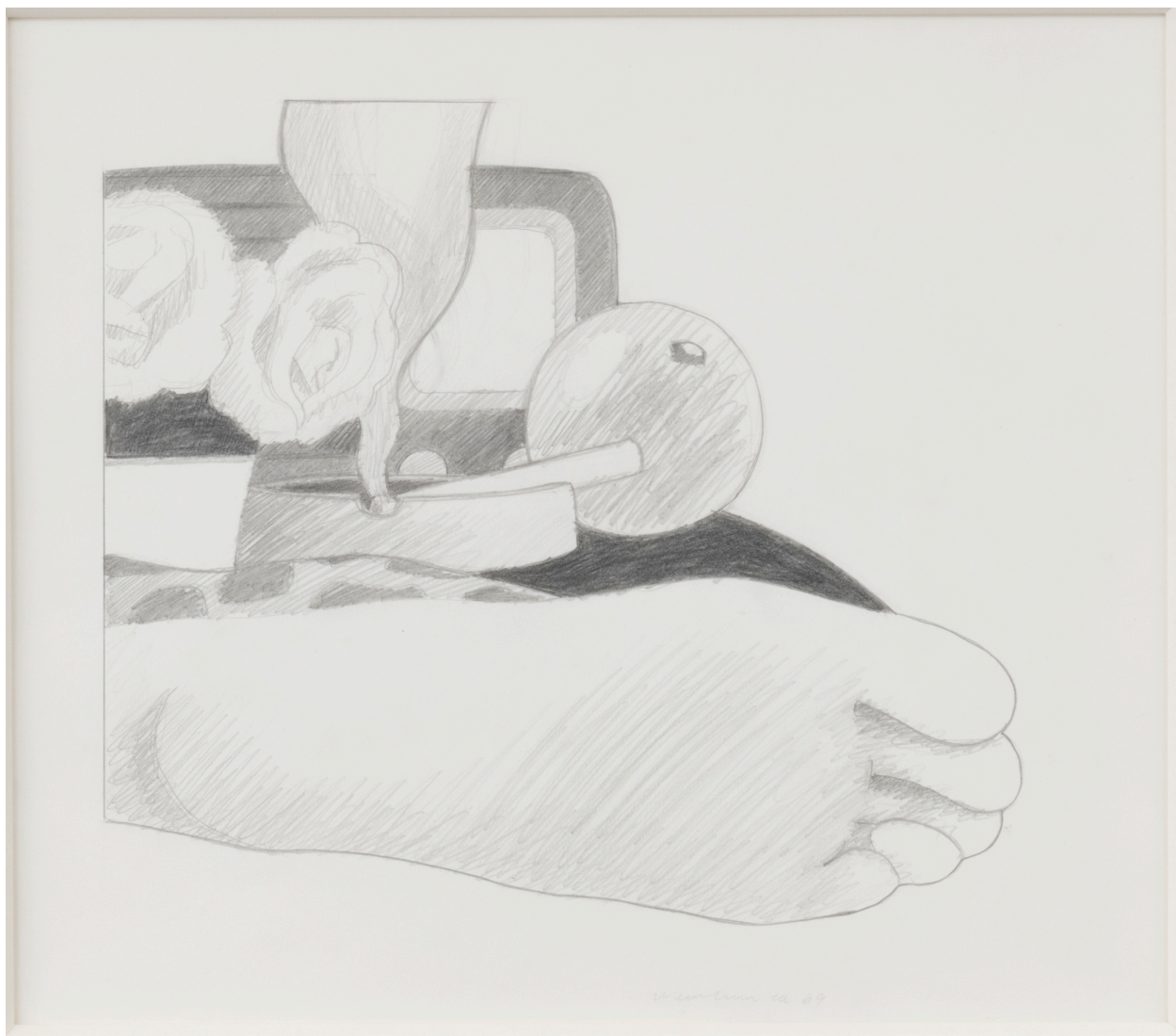
Tom WESSELMANN

SMOKER STUDY, 1973

Pencil and liquitex on paper

8 x 10 5/8 in.

Signed Verso "The Estate of Tom Wesselmann Claire Wesselmann, Executor"



Tom WESSELMANN

DRAWING FOR BEDROOM PAINTING #14, 1969

Pencil on paper

13 3/4 x 17 in.



Tom WESSELMANN
STUDY FOR STILL LIFE #40, 1964
Liquitex and graphite on paper
22 3/4 x 31 1/2 in.



Tom WESSELMANN

JUDY TRYING ON CLOTHES, 1986–1992

Enameled cut steel

57 3/4 x 78 in.



Tom WESSELMANN
SEASCAPE #1, 1965
Liquitex on board
48 x 30 in.



Tom WESSELMANN
SMOKER #22, 1975
Oil on shaped canvas
82 1/2 x 76 in.