



George Rickey: A Survey

April 6 - May 13, 2023

Davidson Gallery presents, *George Rickey: A Survey*, an exhibition of works by acclaimed sculptor George Rickey. This show marks the 18th solo exhibition at the gallery for George Rickey, dating back to their first collaboration in the 1970s. Rickey's work runs the gamut from intimate and delicate to monumental. Throughout his career, George Rickey refused to be pigeonholed, constantly reimagining kinetic sculpture and always trying to define motion in ways that other artists did not. From his earliest hanging sculptures, reminiscent of Alexander Calder's mobiles, to his first major outdoor work which is now in the collection of MoMA, Rickey constantly changed scale, material, form, and technology, but always with a throughline of motion that was his legacy.

Rickey approached his art with a constructivist mindset, he was both a collector of Constructivist material (his collection of Constructivist works is now at the Neuberger Museum) and close friends with Antoine Pevsner and Naum Gabo. His most well-known works – those made of brushed stainless steel forms – epitomize the austerity of Constructivism, but also the forward-looking, self-aware stance that art is and must be socially integrated. Rickey's work, cutting through space, defining motion, intimating identifiable forms while maintaining its abstraction, remains masterful and contemporary.

George Rickey
Open Trapezoids, One Up, One Down
1984
Stainless steel
155 x 22 x 23 in.
Signed, dated and numbered 'Rickey 1984 1/3'



George Rickey
Divided Square Oblique III
1981
Stainless steel
Height: 108 in.
Blades: 48 in.
Signed and dated on base



George Rickey
Persephone III
1966-68
Stainless steel and stone base
18 x 31 x 13 in.
Signed and dated 66-68 on the base



George Rickey

Windflower

1959

Stainless steel, copper and brass

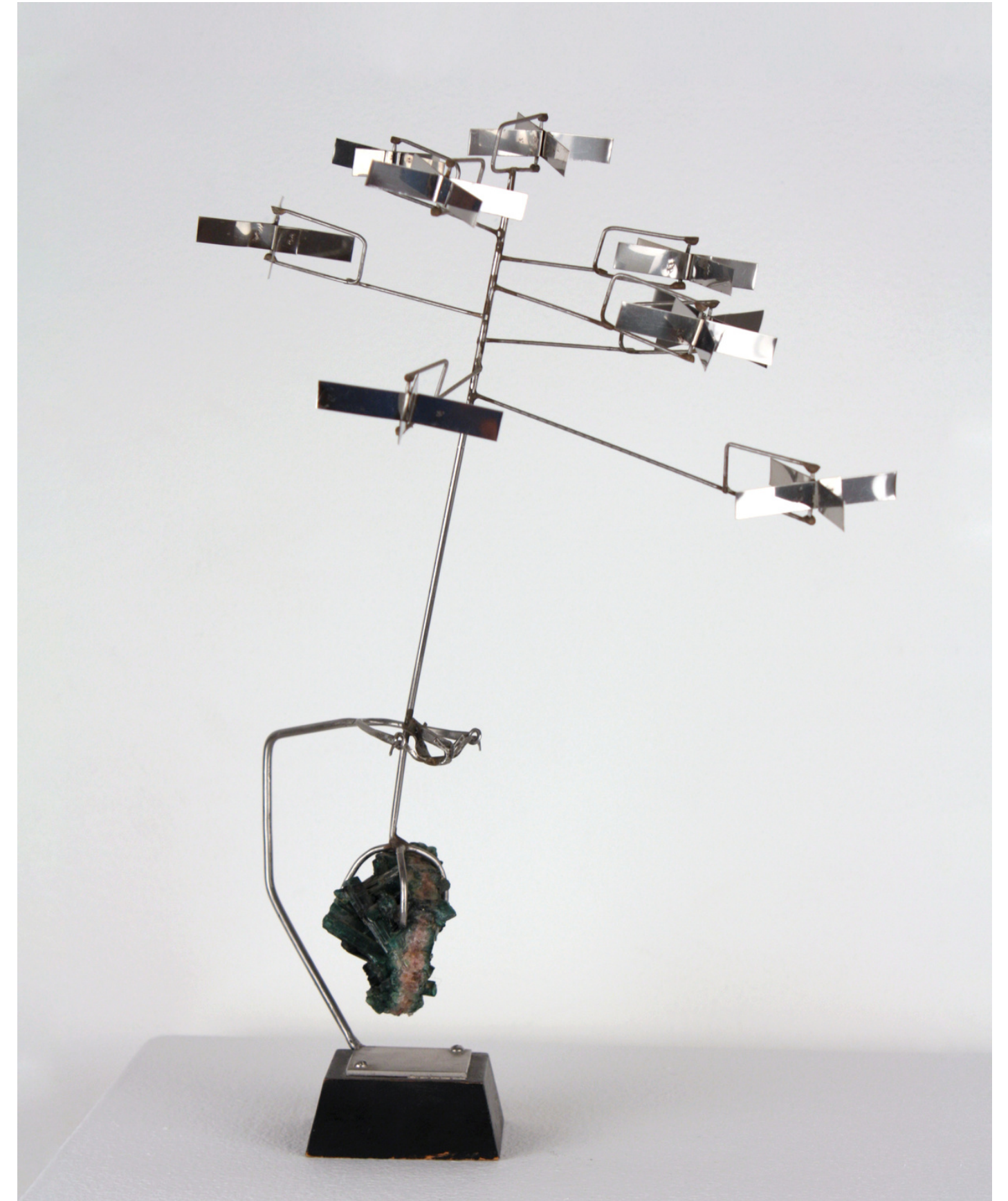
31 x 17 x 10 in.



George Rickey
Tree
1956
Stainless steel and polychrome
35 1/2 x 19 x 19 in.



George Rickey
Nine Rotors with Tourmaline
1964
Stainless steel and tourmaline
13 x 8 1/2 x 9 in.
Signed and dated on base



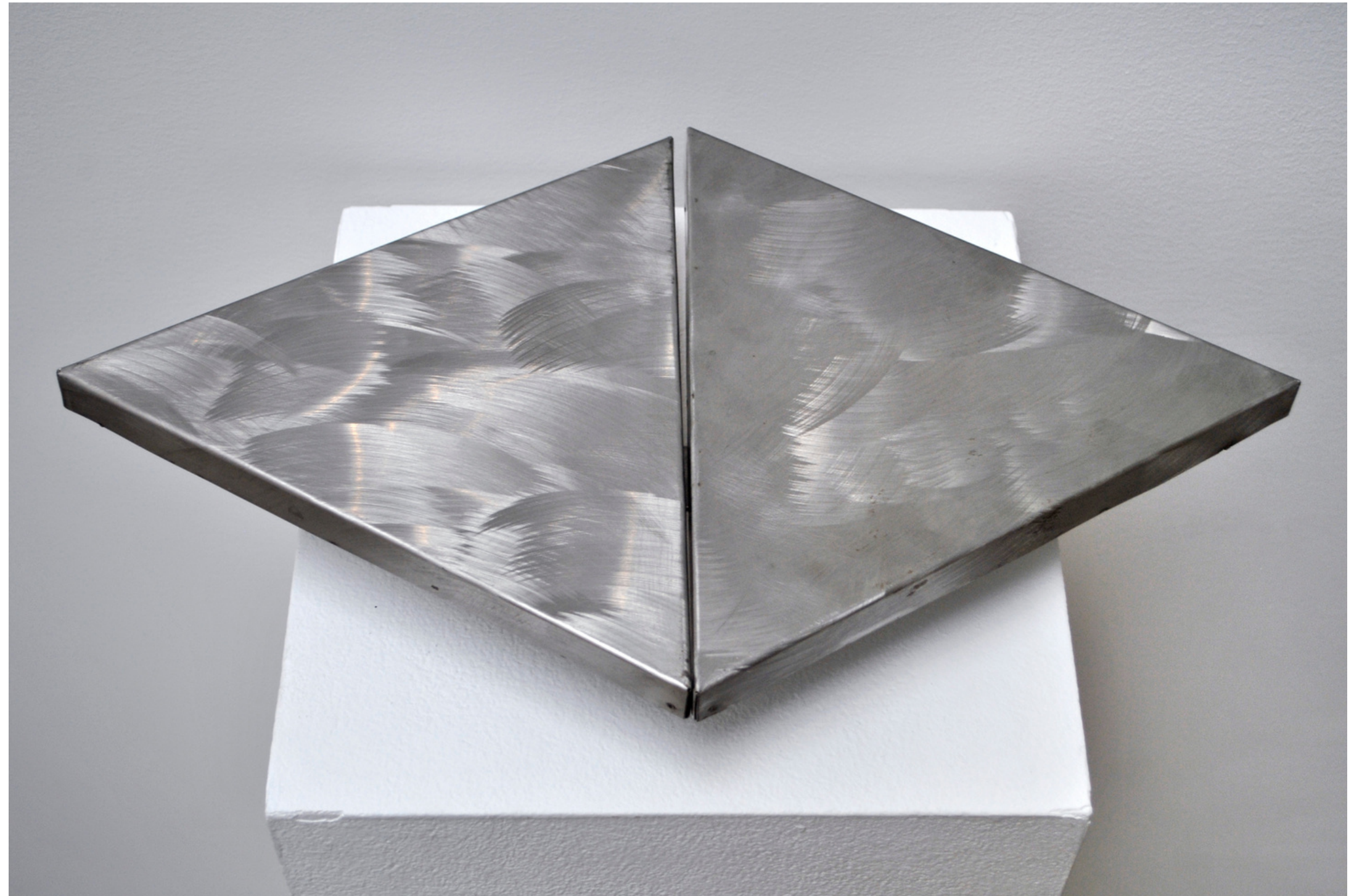
George Rickey
Sedge III
1961
Stainless steel
57 x 32 x 14 in.
Signed and dated



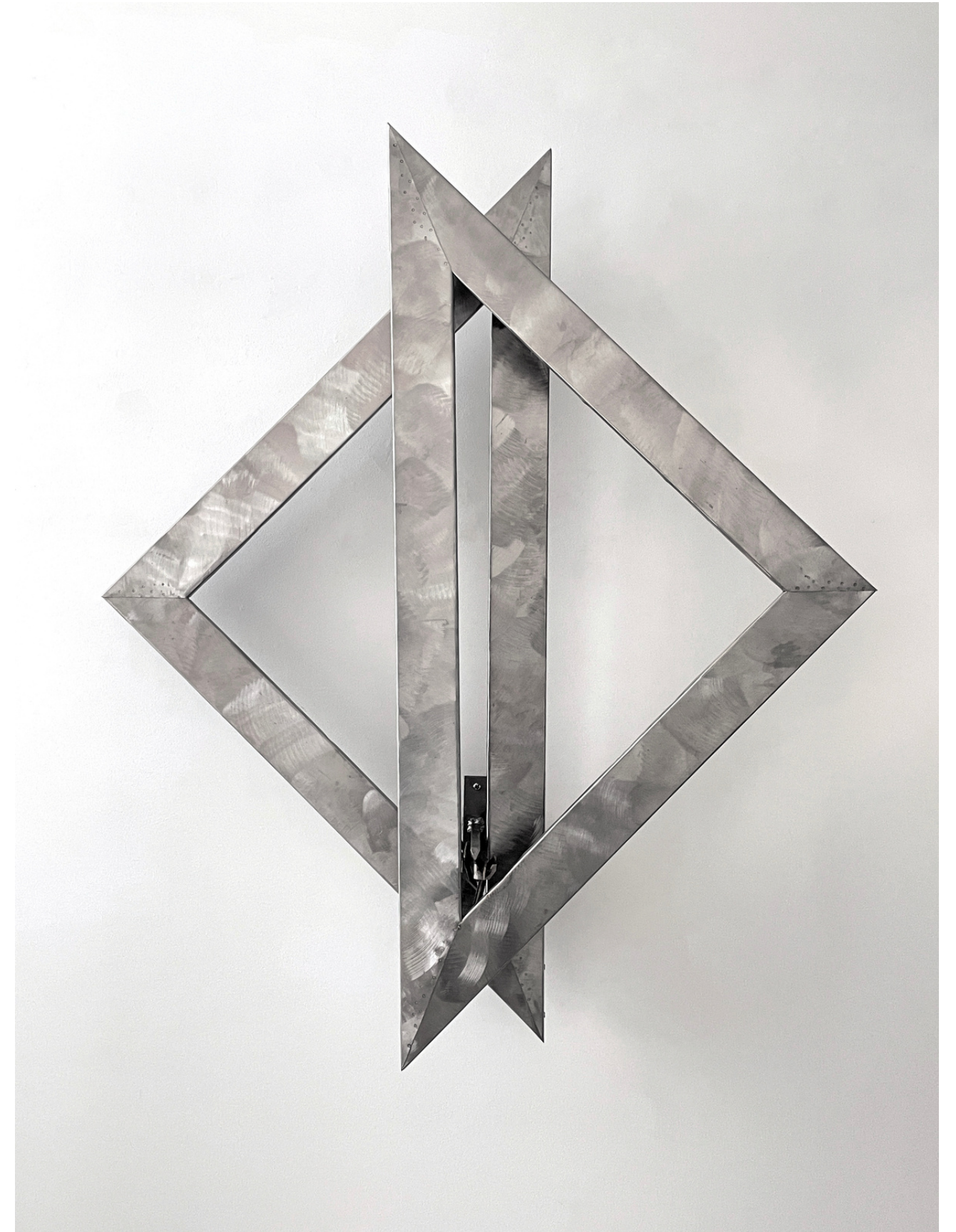
George Rickey
Sedge Theme: Five Lines and a Square
1964
Stainless steel
34 1/2 x 20 x 6 1/2 in.



George Rickey
Two Triangles Dihedral
1973
Stainless steel
3 1/2 x 19 1/2 x 11 1/2 in.
Signed "Rickey 1973 8/8"



George Rickey
Two Open Triangles Up Wall Narrow
1981
Stainless steel
49 x 42 x 8 in.



George Rickey
L's One Up One Down Excentric Var II, 1/3
1989
65 x 26 in.
L's: 30 x 14 in.
Signed, numbered, and dated on base



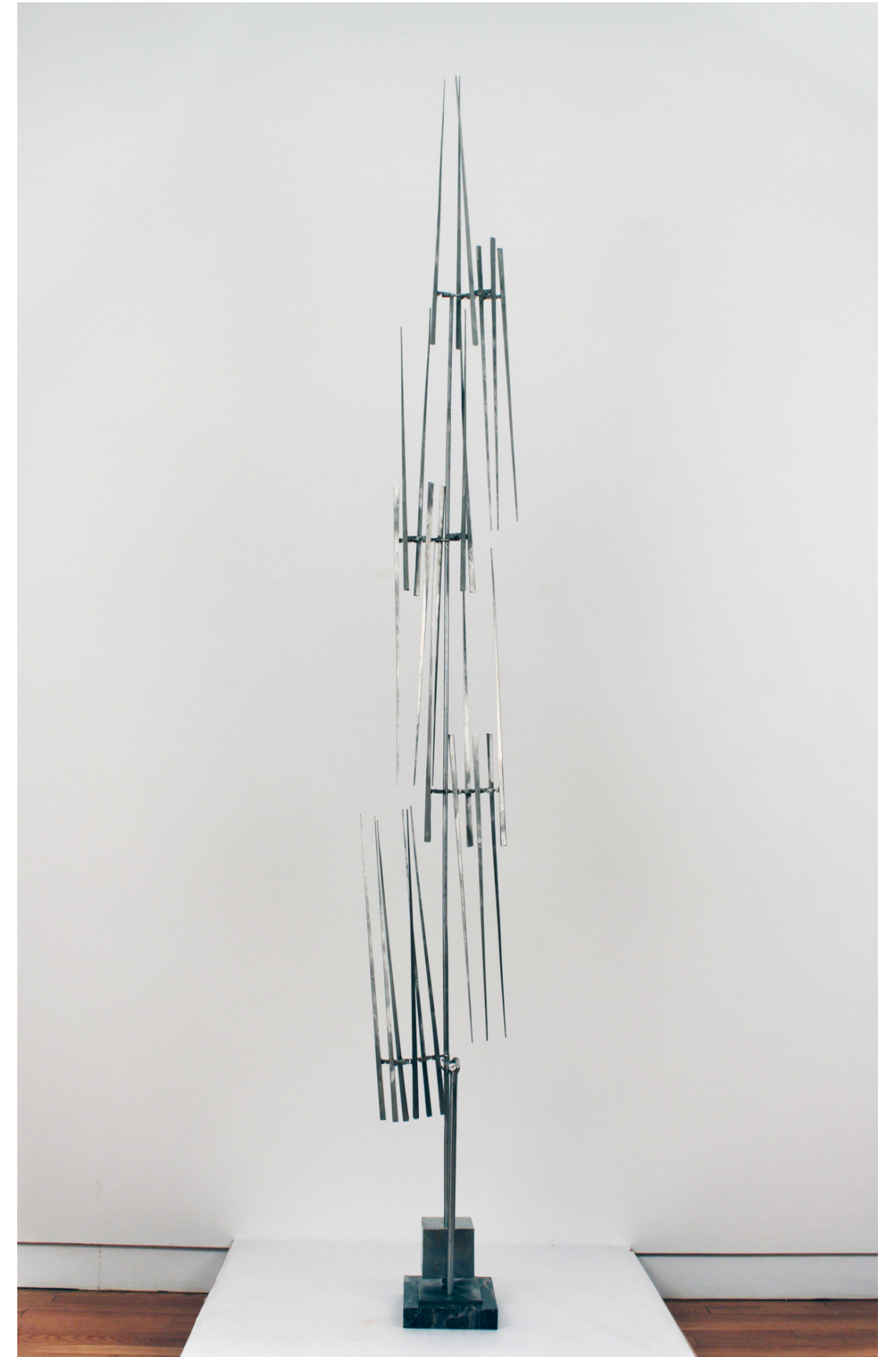
George Rickey
N Lines Vertical

1967

Stainless steel and lead with marble base

95 x 10 x 29 in.

Signed and dated on counterweight



George Rickey
Column of Seven Triangles with Spirals
1975
Gilded Stainless steel wire
28 1/2 x 8 x 6 1/4 in.
Signed and dated on base



George Rickey
Seascape
1988
Stainless steel
16 x 125 x 16 in.
Blades: 60 in. (approx.)
Edition 1/3, but unique



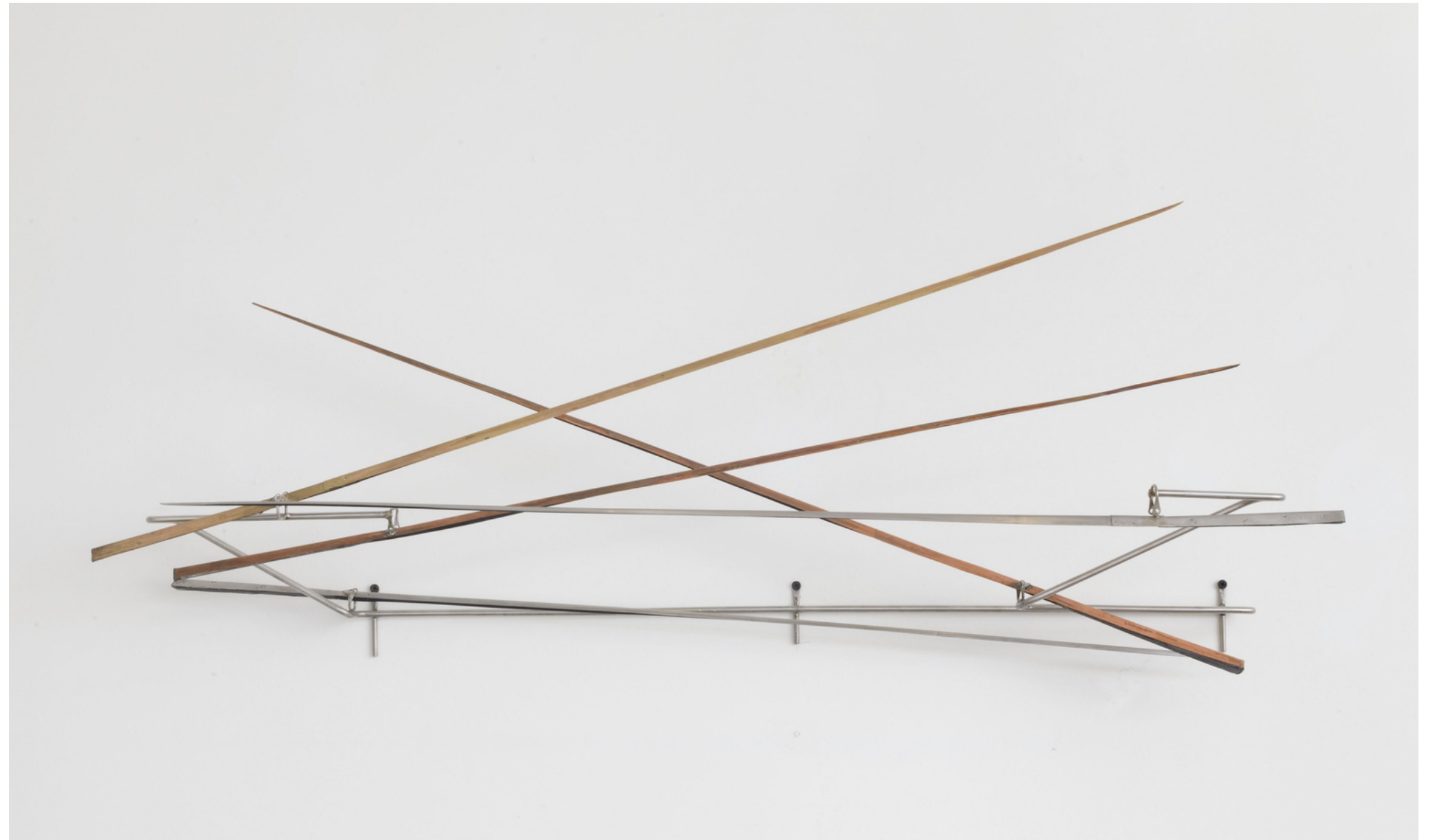
George Rickey

Tidal

c. 1964

Stainless steel, copper and bronze

5 x 40 x 8 1/2 in.



George Rickey
Untitled - Fish
1998
Stainless steel and polychrome
11 x 22 1/2 in.
Signed and dated



George Rickey
Little Vine with Copper
1959
Stainless steel and copper
17 1/2 in.



George Rickey
Mobius
1999
Stainless steel
11 x 8 x 8 in.
Signed and dated



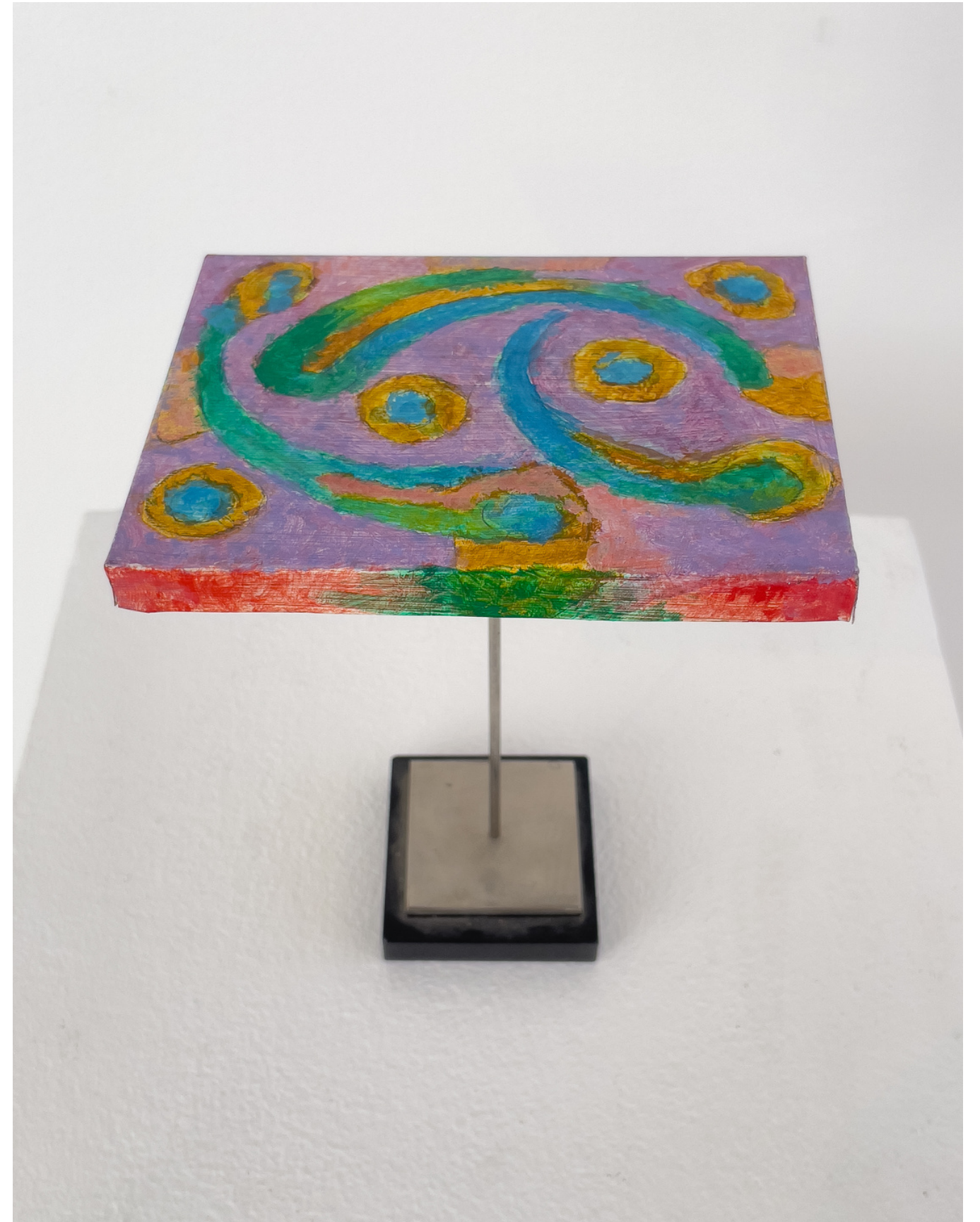
George Rickey
Pivoted Fold Baroque
1993
Stainless steel
7 x 6 x 7 1/2 in.



George Rickey
Pivoted Fold Baroque
1994
Stainless steel
8 x 5 1/4 x 5 1/4 in.
Signed and dated on base



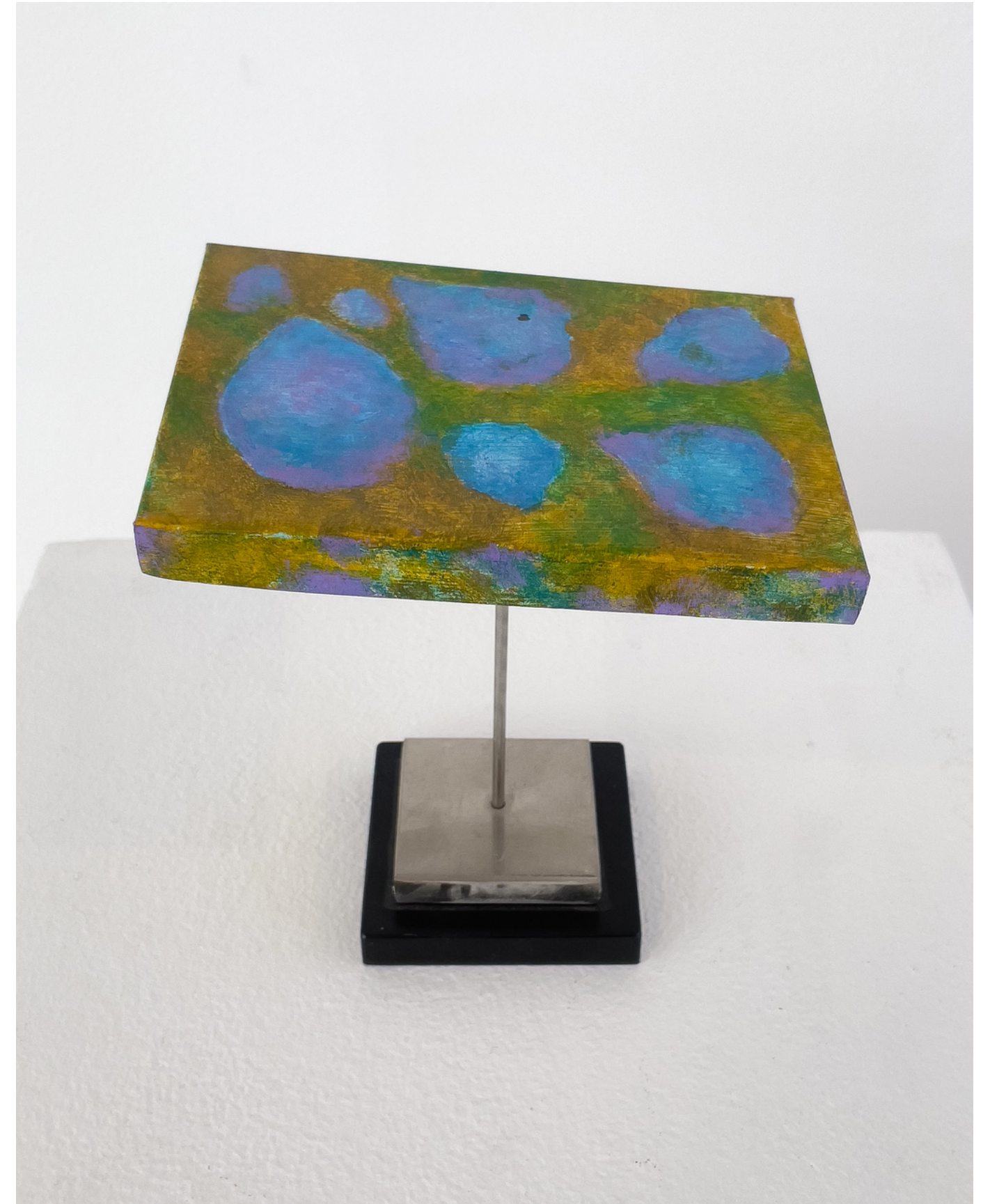
George Rickey
The Big Grin
1998
Stainless steel and polychrome
7 1/2 x 5 1/2 x 4 in.
Signed, titled, and dated



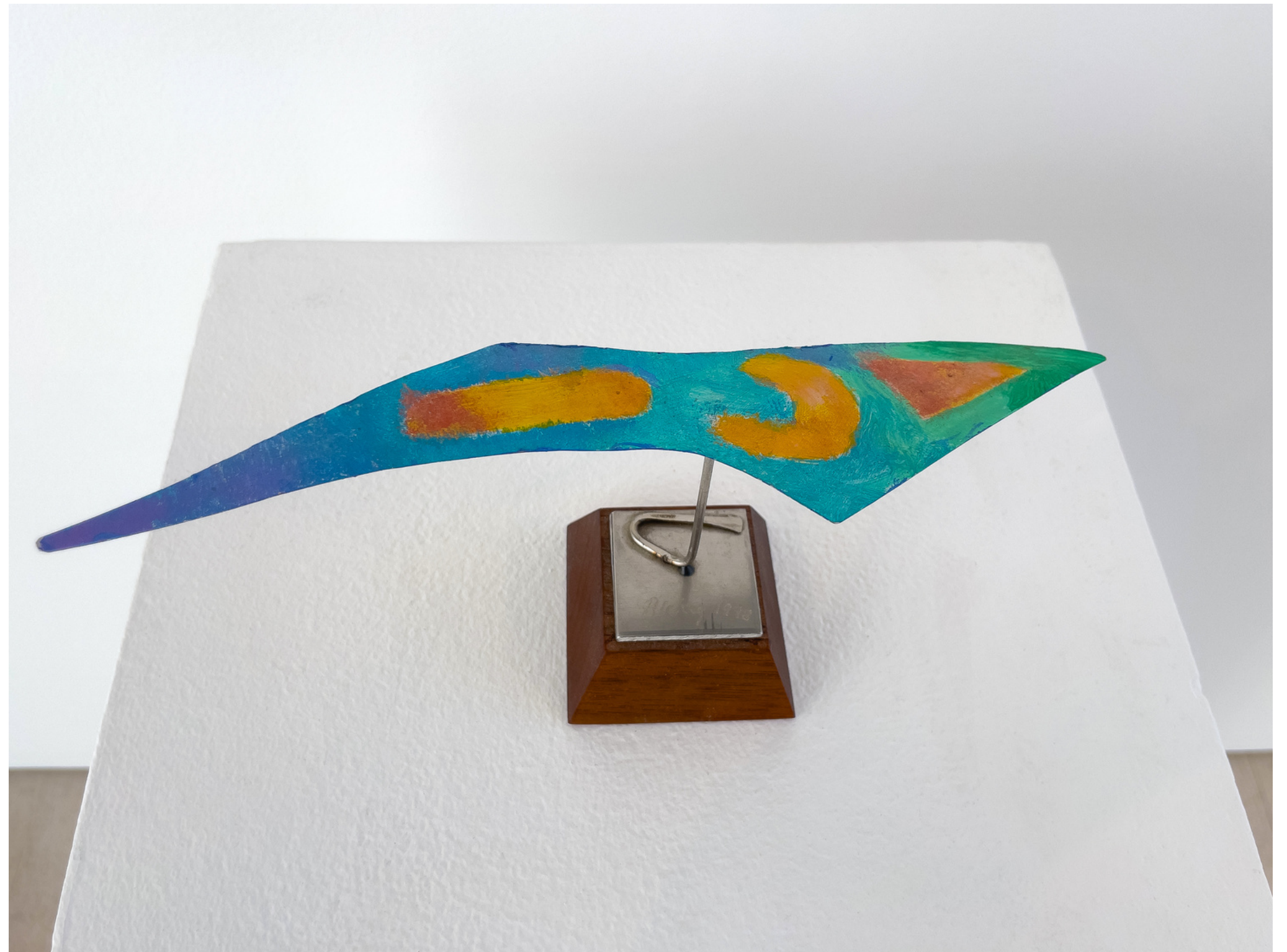
George Rickey
Untitled
2001
Polychromed stainless steel
6 x 8 in.



George Rickey
Untitled
1998
Stainless steel and polychrome
4 x 5 1/2 in.
Signed and dated on base



George Rickey
Untitled
1998
Stainless steel and polychrome
4 x 5 1/2 in.
Signed and dated on base



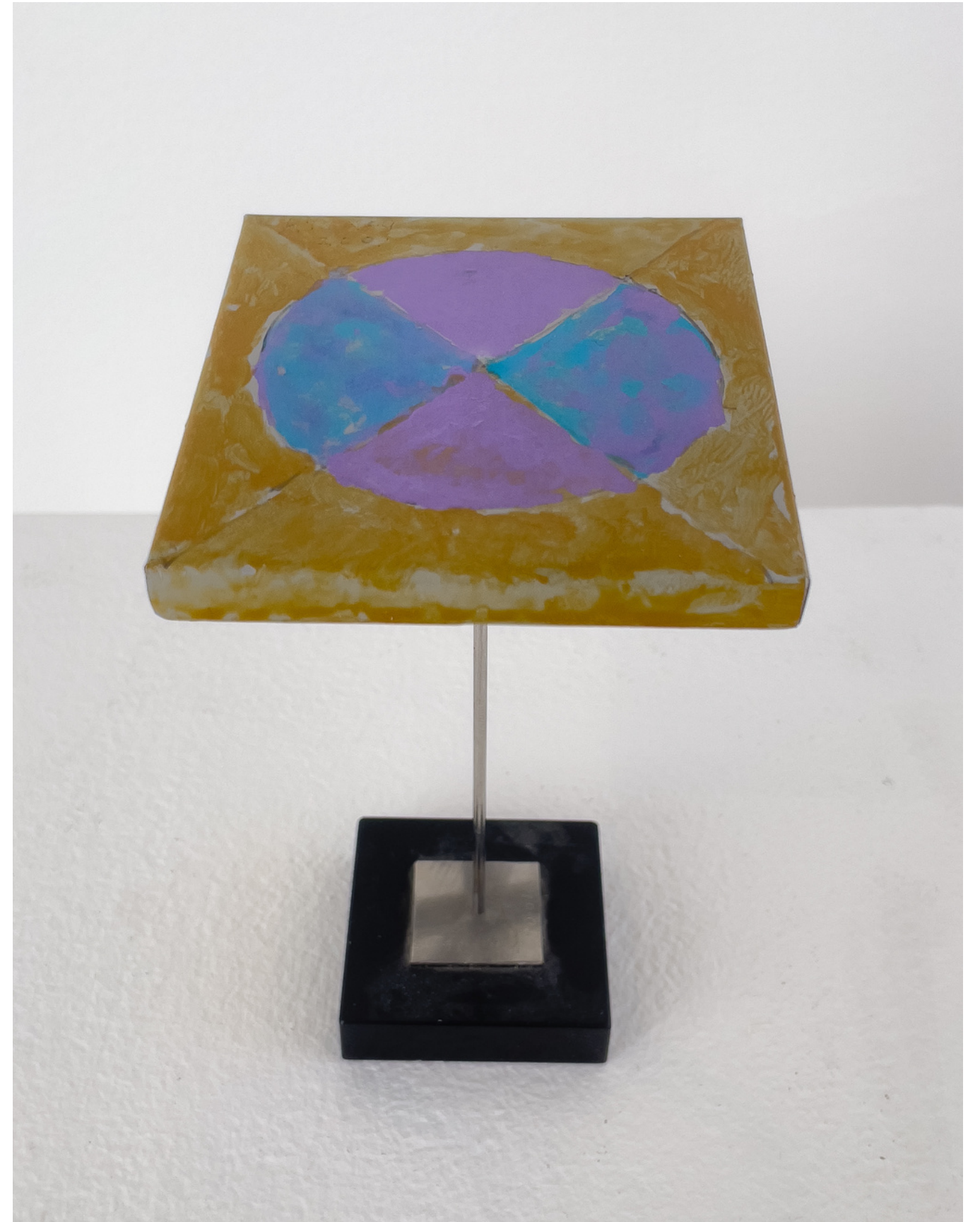
George Rickey
Bronze Pagoda
c.1995
Bronze and stainless steel
6 x 6 x 5 in.



George Rickey
Pagoda
1997
Polychromed Stainless steel
4 1/2 x 4 1/2 x 3 in.



George Rickey
Untitled
2001
Stainless steel and polychrome
5 1/2 x 3 1/2 x 3 1/4 in.
Signed and dated on base



George Rickey
Double L Excentric Gyratory - Pond
1988
Stainless steel
Height: Approx. 22 ft. 6 in.
L's: 18 feet x 7 ft. 3 in.
(Not on site)

